



PHILANTHROPIE
construyendo un mundo mejor



ANNUAL REPORT 2024



Executive Direction

D

ear all,

I address you with gratitude and appreciation for this year filled with learning and new experiences for me in the executive direction of the association.

After dedicating approximately 13 years to working for the development of the communities in my state, I have made the decision to pursue my dreams as an entrepreneur. For this reason, I am bidding farewell to this deeply human association, which has allowed me to weave a network of professional support and cherished friendships within the communities—something I will always carry in my heart.

I have no doubt that the leadership of my colleague, Saraí Arellanes, will guide this association toward new and better paths. Her youth and experience support her, along with the career she has built within the association.

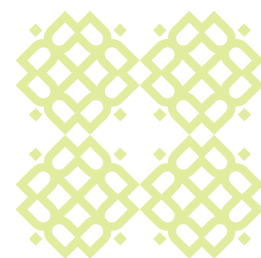
I wish each and every one of you great success, and may our friendship endure always.

Sincerely,

MDA.

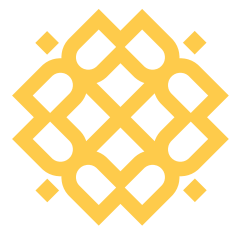
Martha Drew

Executive Director (Term 2024)



"Education is the most powerful weapon to transform the world."
Nelson Mandela





Board of Directors

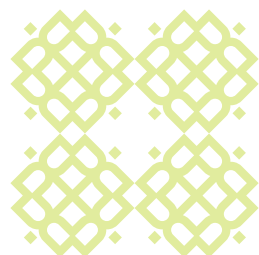
Kathleen Doyle Myers
Jordan Auston Bailey
Alma Delia Rico Raygoza
Hector Trinidad Meléndez
John Peter Matlak
Jimena Gallegos Palos
Yadira Trejo Hernandez
Concepción Molina Islas

Operative Team

Martha Drew Aguilar
Lizbeth Ramirez Ambriz
Sarai Yamileth Arellanez Pérez
Perla Margarita Duarte Gómez
Rosario Dalila Osuna Toba
Genesis Elisama Morales Villavicencio
Francisco Javier Antuna Mendiola

Consultancy

Martha Adriana Márquez Salaices
Ana María León Miravalles
Manuel Benjamín Mayoral García
María Vanessa Rivadeneyra Navarro



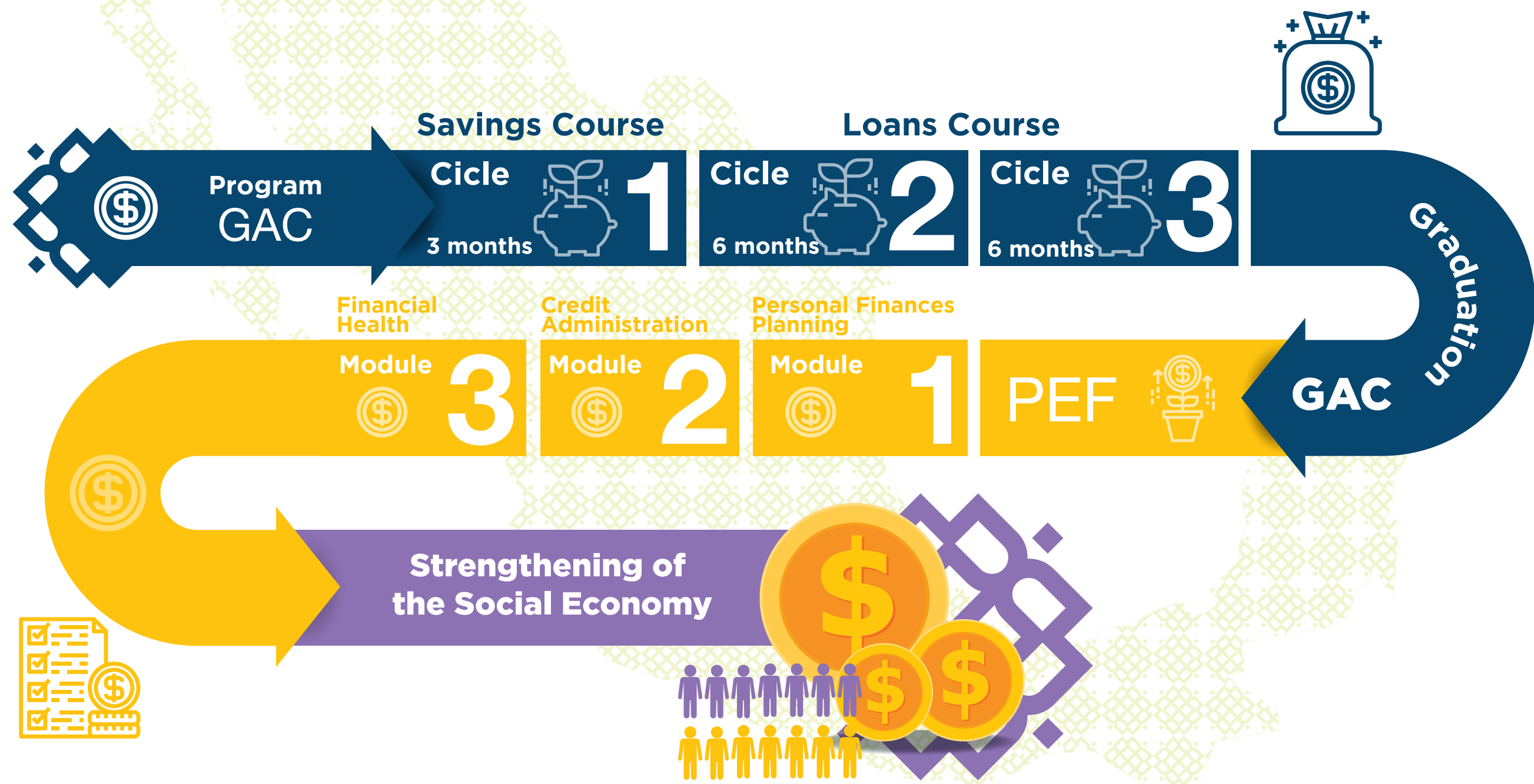
Mission

We collaborate with communities to strengthen financial well-being, development, and social cohesion through capacity building, accompaniment, and the generation of alliances within a framework of social and solidarity economy.

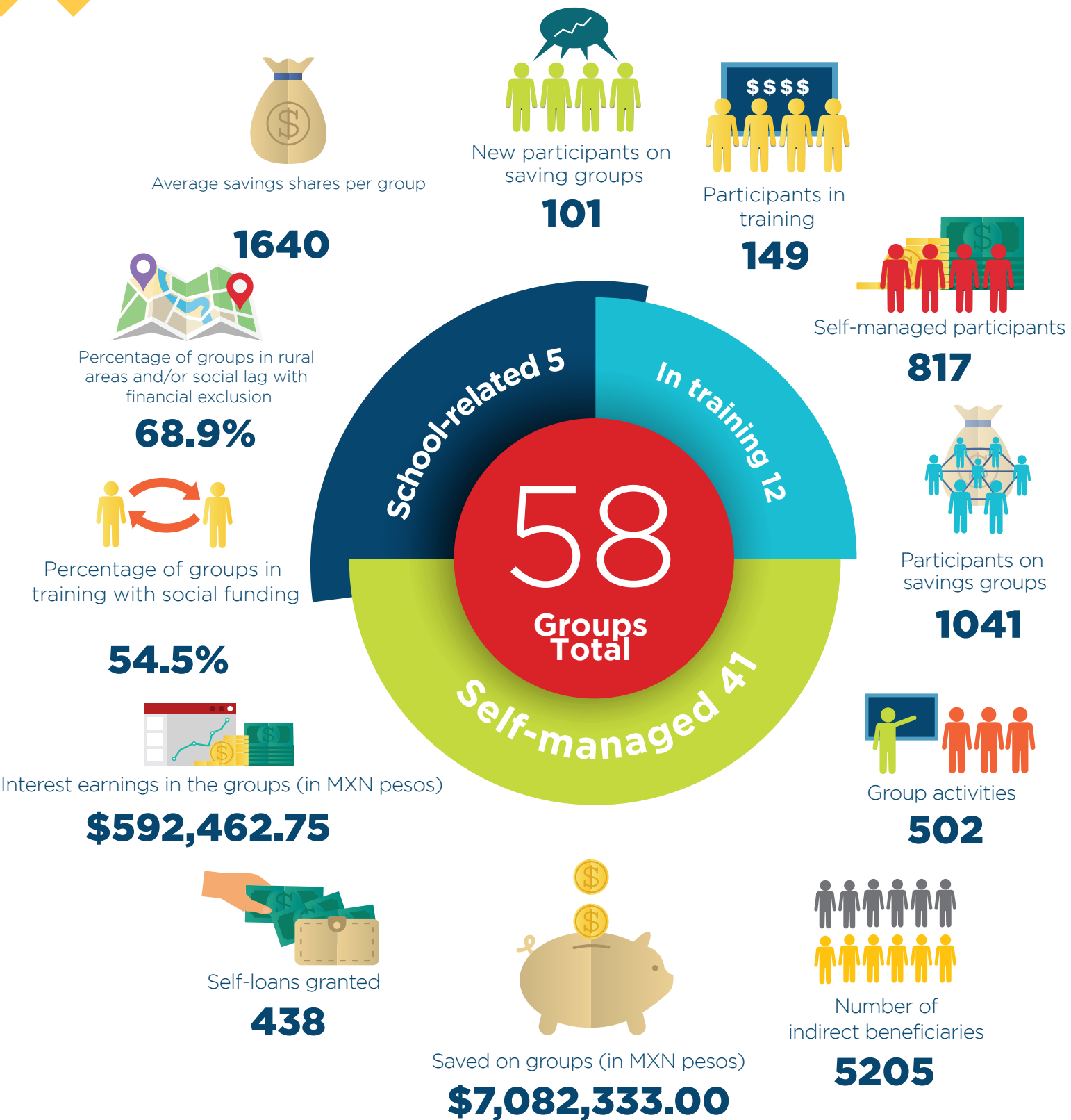
Vission

Cohesive, resilient communities with the capacity for self-management and the ability to generate their own opportunities for economic and community development.

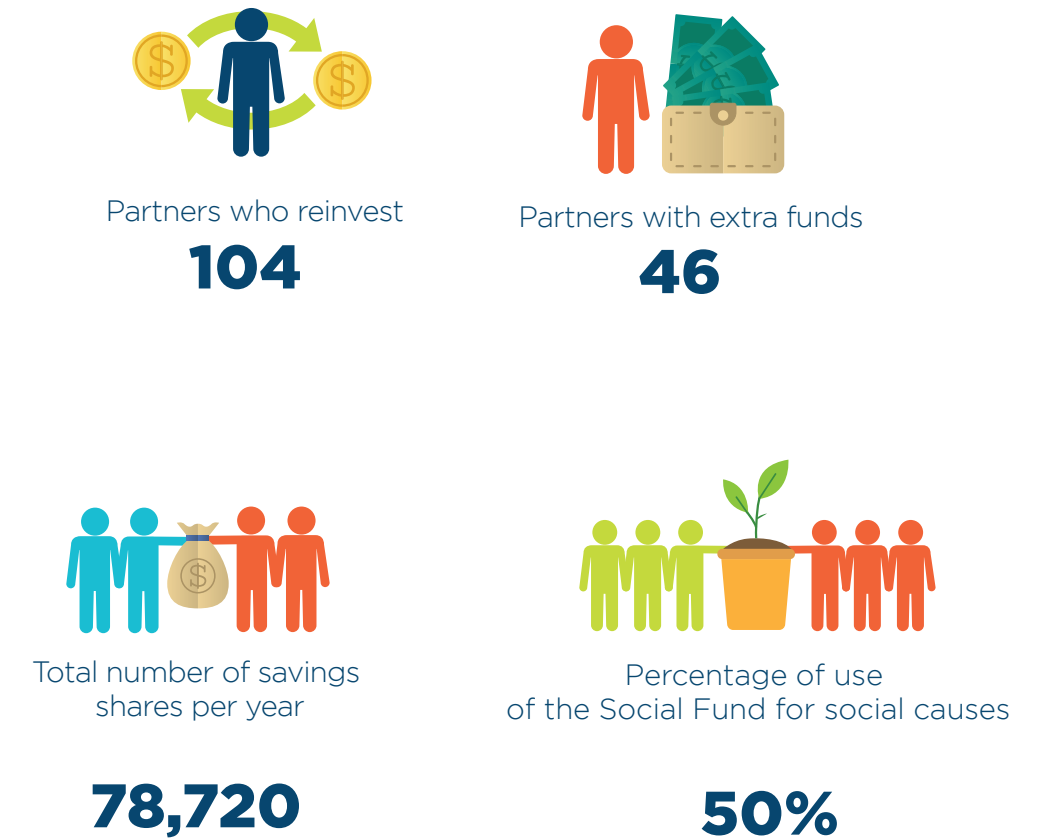
Model of Support



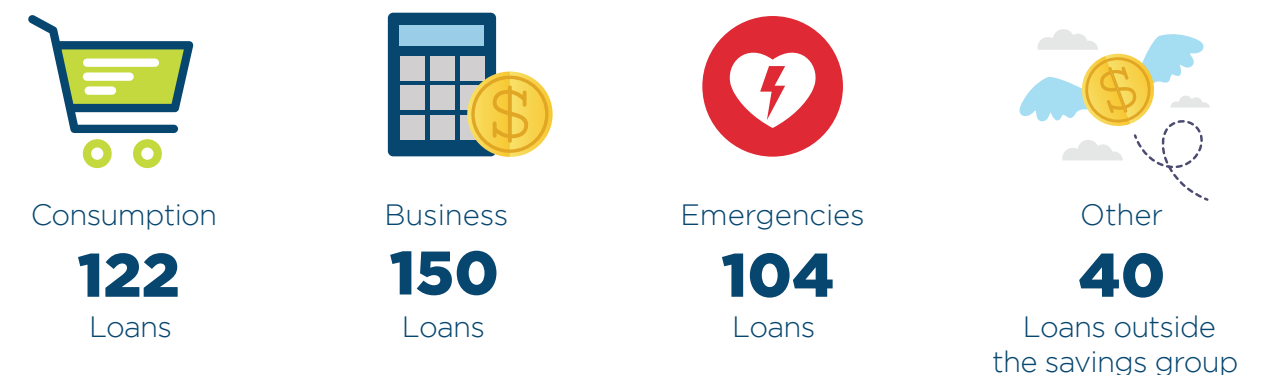
Performance Indicators



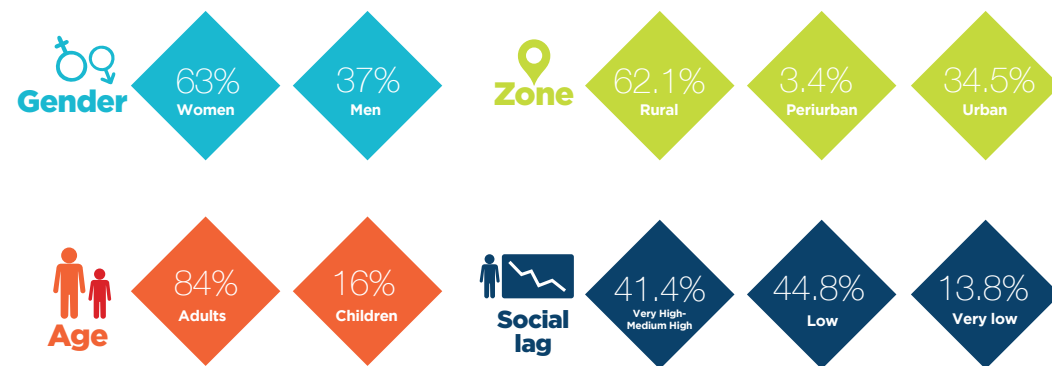
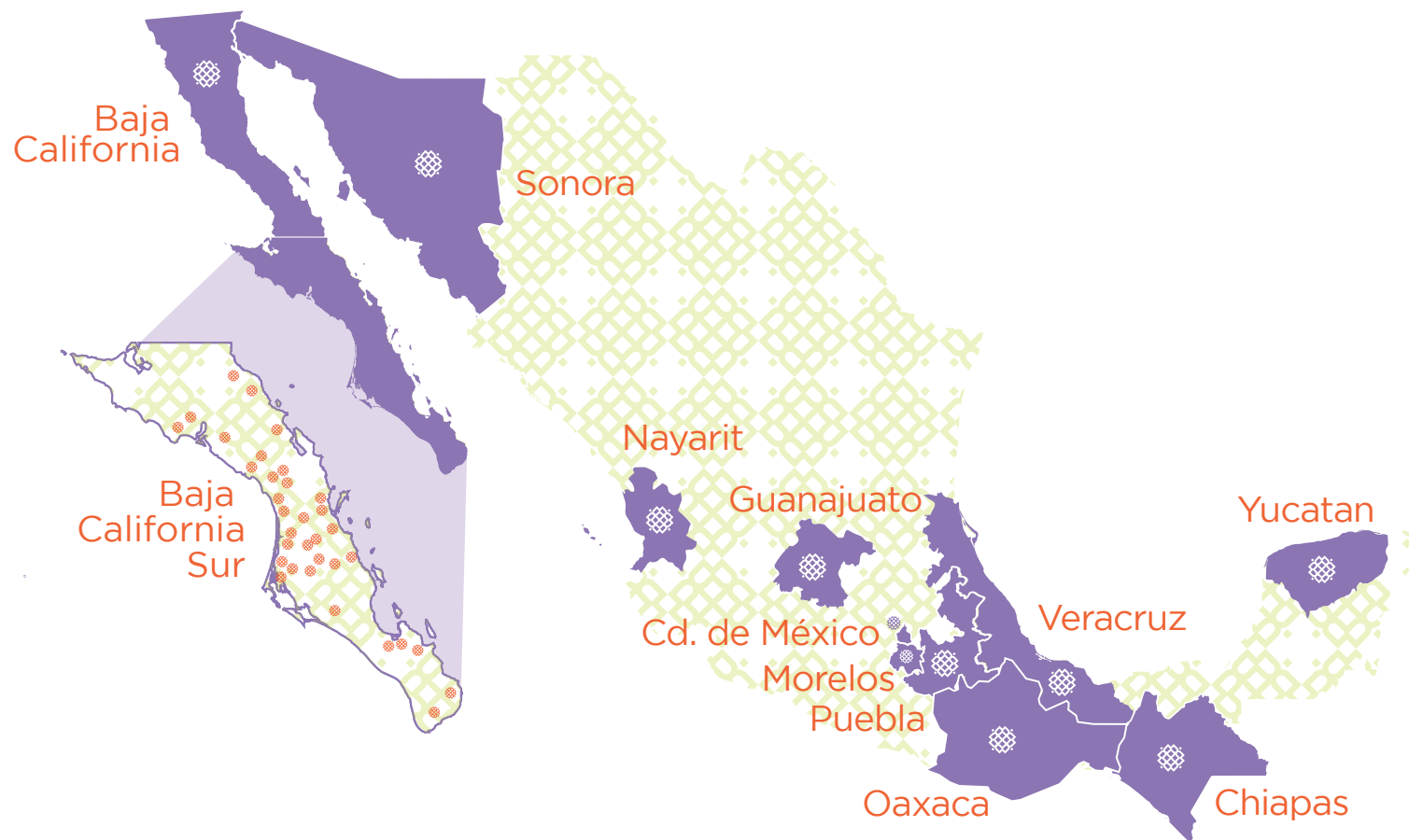
Effect Indicators



Loans usage

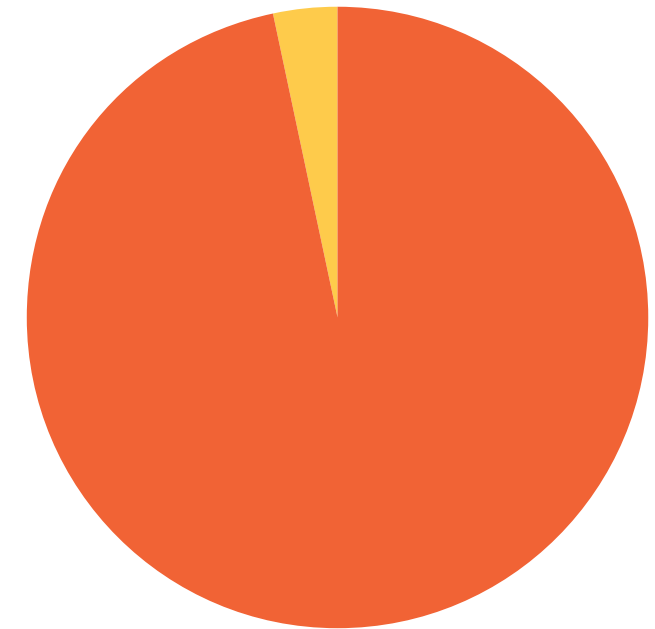


Programs Reach

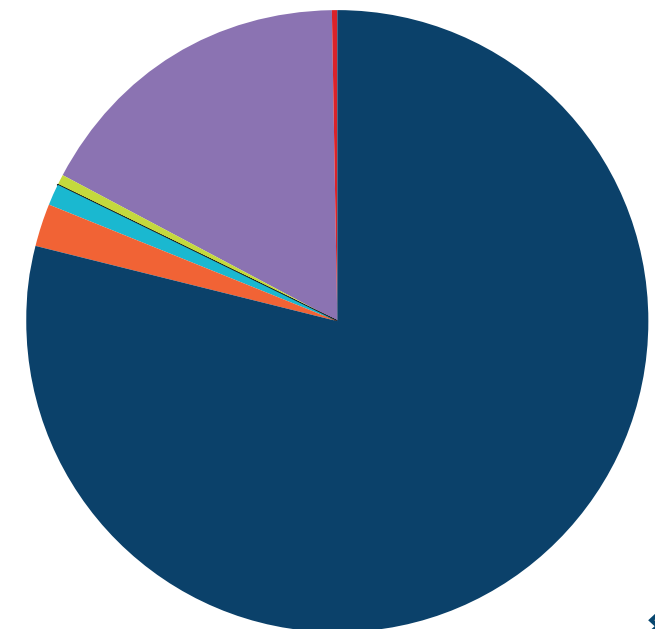


Finances

- Foreign donations - 96.70%
- National donations - 3.30%



- Fundación Philanthropiece - 79.21%
- Sociedad de Historia Natural Niparájá AC - 2.12%
- Alianza para la Seguridad Alimentaria - 1.04%
- Donativo por Robert Leupold - 0.23%
- Donadora por David Vinton Landes - 0.4%
- Inter American Foundation - 17.02%
- Donadora - 0.15%



20
24

Testimony



Supernova Community Savings Group Mulegé, BCS

Supernova Community Savings Group, located in the community of Santa Martha in the municipality of Mulegé, BCS, composed of 15 members, has managed to consolidate over the years by carrying out collective projects. These projects have allowed them to improve the service for visitors to the cave paintings. With the guidance and support of Philanthropiece through the FASOL organization, they have secured funding for the construction of a palapa, so visitors can shelter from the sun and rest during their tour.

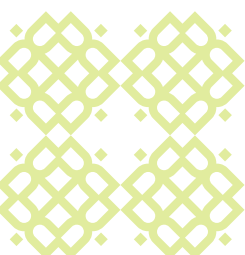


Members of the Supernova Community Savings Group building a palapa in the resting area of the cave paintings at El Parral.

Aliances

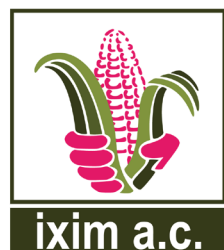


Público en general





Friend organizations



♦ **7mo. INTERCAMBIO** ♦
DE EXPERIENCIAS 2024-II
Formando personas promotoras comunitarias



Our sincere gratitude to all the organizations, community promoters, Community Savings Groups, and change agents who made the 7th Exchange of Experiences 2024 possible.

Thank you for your participation, for sharing your knowledge, and for being part of this space for dialogue and learning. It has been an incredible experience to connect with so many minds and hearts committed to strengthening social cohesion, financial inclusion, and the sustainable development of our communities.

It was an honor to host you and reflect together on the importance of Community Savings Groups as tools for economic autonomy and social fabric. In a constantly changing world, networking, resilience, and collective action are key to building a more equitable and sustainable future.

Let's continue joining efforts and weaving paths of change. See you at the next event!



PHILANTHROPIECE
construyendo un mundo mejor

www.ppac.mx



Benito Juárez
E/ Hermenegildo Galeana y Javier Mina
Local 5
Cd. Constitución, Baja California Sur
23600
México

ppmx@philanthropiece.org